



18th **REAL-TIME**
CONFERENCE

| 2012

June 11-15, 2012, Berkeley, CA

Your Customers and Competition will be There—Make sure you are too!

You are invited to exhibit at the 2012 Real-Time Conference. Sponsored by the IEEE Nuclear Plasma Sciences Society, Real-Time Conference multidisciplinary conference devoted to the latest developments on realtime techniques in the fields of plasma and nuclear fusion, particle physics, nuclear physics and astrophysics, space science, accelerators, medical physics, nuclear power instrumentation and other radiation instrumentation.



**18th REAL-TIME
CONFERENCE** | 2012
June 11-15, 2012, Berkeley, CA

Official Invitation from the Conference Chair

Dear Prospective Exhibitor,

The 18th IEEE Real Time Conference (RT2012) vendor exhibit will be held at the Shattuck Hotel in downtown Berkeley, California, on June 11-12, 2012. The RT2012 is held biannually and serves as the premier forum for interdisciplinary information exchange on real time data acquisition and computing systems in physical science applications.

Historically, this event has congregated more than 200 scientists, educators, engineers and organizations sharing ideas, concepts and discoveries about real time systems. This conference travels between three continents, and we are proud to host the 2012 edition in Berkeley. Given the characteristics of the Bay Area, it represents a unique opportunity for the exhibitors. The area includes three National Laboratories, two of the top universities in the world and a constellation of outstanding high-technology companies.

The conference will select papers on real time systems for applications including high energy physics, nuclear physics, astrophysics and astroparticle physics, nuclear fusion, medical physics, space instrumentation, nuclear power instrumentation, real time security and safety and general radiation instrumentation.

See the prospectus for more details. In addition to the basic booth packages, we are soliciting sponsorship for other aspects of the conference, including social events, food/beverage breaks, the Monday evening reception and Thursday evening banquet, student travel grants, etc. If you are interested, please, contact Alicia Zupeck (see below) for more information about these opportunities. Also, visit us at rt2012.lbl.gov.

Exhibitor participation is important for the success and relevance of our conference. We look forward to welcoming you at the RT2012 Exhibition.

Sincerely,

Sergio Zimmermann, Chair
Lawrence Berkeley National Laboratory
Conference web-site: RT2012.lbl.gov

Alicia Zupeck, CMP
Conference Planner
IEEE Meeting & Conference Management
Phone: +1 800 810 4333
Direct: +1 732 562 3870
Fax: +1 732 465 6447
Email: a.zupeck@ieee.org



**18th REAL-TIME
CONFERENCE** | 2012
June 11-15, 2012, Berkeley, CA

Connect and Network with...

RT 2012 is an interdisciplinary conference on realtime data acquisition and computing applications in the physical sciences. These applications include: High energy physics, Nuclear physics, Astrophysics and astroparticle physics, Nuclear fusion, Medical physics, Space instrumentation, Nuclear power instrumentation, Realtime security and safety, General Radiation Instrumentation.

Specific topics include (but are certainly not limited to) the list shown below. We welcome correspondence to see how your research fits our venue.

Suggested Topics

- ◆ Realtime system architectures
- ◆ Intelligent signal processing
- ◆ Programmable devices
- ◆ Fast data transfer links and networks
- ◆ Trigger systems
- ◆ Data acquisition
- ◆ Processing farms
- ◆ Control, monitoring, and test systems
- ◆ Upgrades
- ◆ Emerging realtime technologies
- ◆ New standards
- ◆ Realtime safety and security
- ◆ Feedback on experiences

Interested in Exhibiting?

Contact Alicia Zupeck

732-562-3870

a.zupeck@ieee.org

<http://rt2012.lbl.gov>



18th REAL-TIME CONFERENCE | 2012

June 11-15, 2012, Berkeley, CA

Conference Highlights & Supporter Opportunities

OFFICIAL CONFERENCE DATES

June 11-15, 2012

LOCATION

Hotel Shattuck
2086 Allston Way
Berkeley, CA 94704
Phone: 510.845.7300

KEY DEADLINES:

Exhibitor Early Registration: 1 April 2012
Abstract Submission: 2 March 2012
Exhibitor Payment Due: 1 April 2012
Hotel Reservation Deadline: 15 May 2012

TENTATIVE EXHIBIT HOURS:

	Day	Start	End
Exhibitor Move In	Monday, June 11	8:30AM	10:00AM
Exhibit Hours (open during reception)	Monday, June 11	10:00AM	8:00PM
Exhibit Hours	Tuesday, June 12	8:30AM	6:30PM

YOUR EXHIBIT FEE INCLUDES:

- 1 – 6' draped table
- 2 – chairs
- 1– Wastebasket
- One (1) complimentary conference registration
- Company listing the official program (print and online)
- Complimentary mailing list of final attendees
- 120V Power Drop

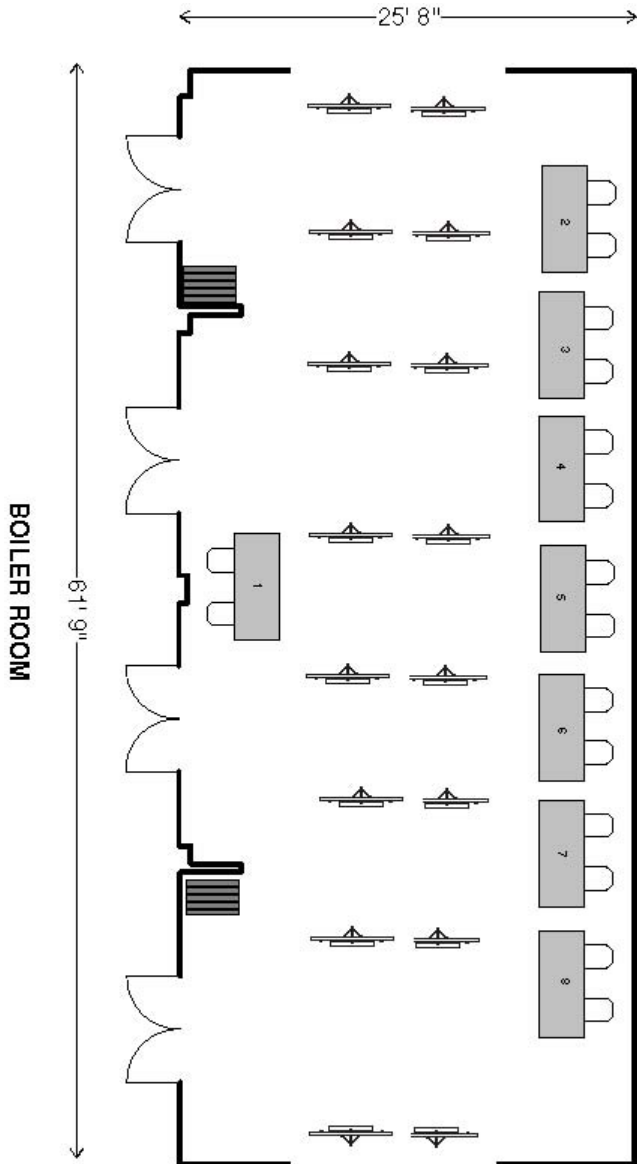
Opportunities Await

Promotional opportunities are available on a first-come, first-serve basis. Reserve the opportunities that spotlight your company's name and start preparing for your company's exposure at the event. To receive additional information on these opportunities, Alicia Zupeck, a.zupeck@ieee.org

EXHIBIT HALL

FLOORPLAN & TENTATIVE HOURS

EXHIBIT & POSTER SPACE LAYOUT

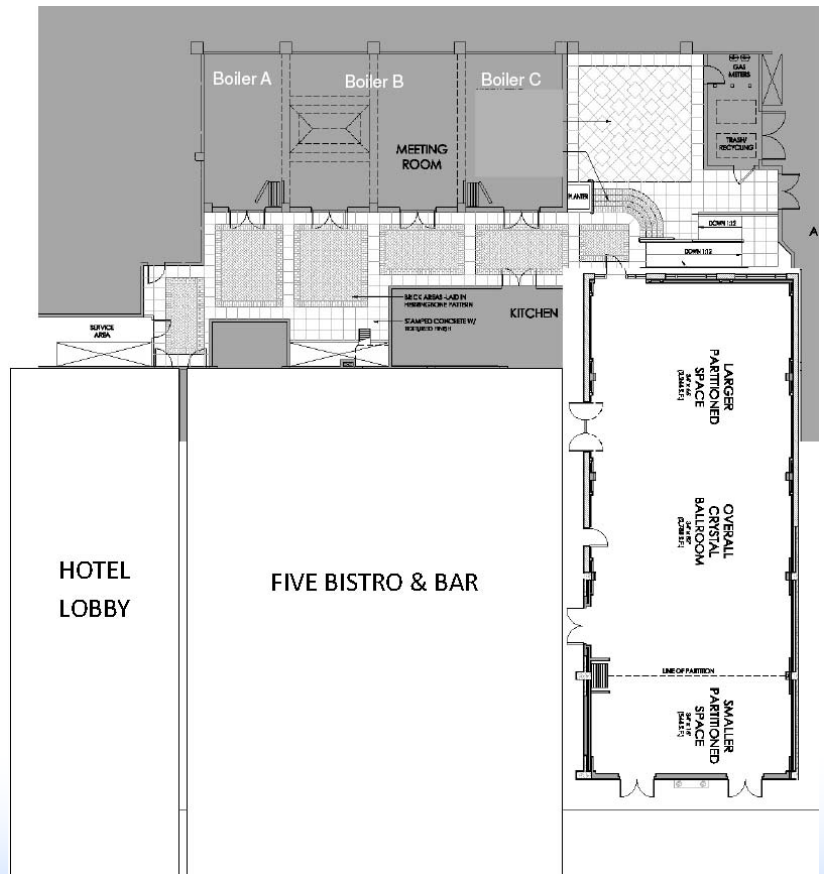


Standard Booth Pricing: US\$1000

***Booths are available on a first-come, first-serve basis.**

Exhibits will take place in the Boiler Room.

HOTEL SHATTUCK FLOOR PLAN



Terms and Conditions

1. Contract

This application, properly executed by Applicant (Exhibitor) shall upon written acceptance and notification of booths assigned by 2012 RT management constitute a valid and binding contract.

2. Assignment of Space

Assignment of space to exhibitors and those making application will be made in the order of postmark date. 2012 RT will continue to receive applications and assign exhibit space, as it remains available, until shortly before the show opening date. In all cases, total booth payments must be received prior to show opening. 2012 RT assignment of booths is final and shall constitute an acceptance of the Exhibitor's offer to occupy space. After assignment, space location may not be changed, transferred or canceled by the Exhibitor except upon written request and with the subsequent written approval of 2012 RT management. 2012 RT management reserves the right to reassign Exhibitor space in order to modify floor plan for overall benefit of the show.

3. Subletting Space

No exhibitor will assign, sublet, or apportion the whole or any part of the space allotted to him, nor exhibit therein, nor permit any other person or party to exhibit therein, any other goods, apparatus, etc. not manufactured or distributed by the Exhibitor in the regular course of his business except upon prior written consent of 2012 RT Management.

4. Exhibit Space Rental Rates

Exhibit space rental includes materials and services described herein.. *Show price per 8 x10 ft space* contracted at \$1000.00 includes booth space without equipment.

5. Payment Requirements and Cancellation Charges

Applications require full payment before booths are assigned. Payment in full is required by 1 April, 2012. All cancellations must be made in writing and will be based on the following schedule of refunds:

Before 1 April, 2012..... Refund Less \$100 processing fee

On or after 1 April, 2012..... No Refund

It is understood that 2012 RT reserves the right, at its option, to reassign a cancelled booth regardless of the cancellation rate assessed. In the event that the premises in which the 2012 RT Show is conducted shall become, in the sole discretion of 2012 RT, unfit for occupancy, or substantially interfered with by reason of any cause or causes not reasonably within the control of 2012 RT, this agreement may be terminated by 2012 RT. For this purpose, the term "cause or causes" shall include, but not by way of limitation, fire, flood, epidemic, earthquake, explosion or accident, blockage, embargo, inclement weather, governmental restraints, restraints or orders of civil defense, or military authorities, act of public enemy, riot or civil disturbance, strike, lockout, boycott or other labor disturbance, inability to secure sufficient labor, technical, or other personnel, failure, impairment or lack of adequate transportation facilities, inability to obtain, or condemnation, requisition or commandeering of necessary supplies or equipment, local, state or federal law, ordinance, rule, order, decree or regulation, whether legislative, executive, or judicial, and whether constitutional, or act of God. Should 2012 RT terminate this agreement pursuant to the provision of this paragraph the Exhibitor waives any and all claims for damages and agrees that 2012 RT may, after computing the total amount of 2012 RT cost and expenses in connection with its preparation for and conducting of the 2012 RT Event, (including a reasonable reserve for claims and other contingencies), refund to the exhibitor, as and for complete settlement and discharge of all said Exhibitor's claims and demands, and amount which bears the same

relationship to the fee paid by said Exhibitor as the total refundable amount as computed above bears to the total amount of fees paid by all exhibitors.

6. Exhibit Booth Manning and Dismantling Schedule

A representative must man exhibit space during all times when Exhibition is officially open. Exhibit space must be maintained in a neat and orderly manner throughout the Exhibition. Exhibitors may begin dismantling only after hours stated in exhibitor service manual. Exhibitors are responsible for removal of all materials used in their display. Any exhibitor leaving materials after hours stated in exhibitor service manual will be charged for the materials' removal.

7. Losses or Damage

Exhibitor agrees that 2012 RT shall not be liable for any damage or liability of any kind or for any loss, damage or injury to persons or property during the term of this agreement, from any cause whatsoever by reason of use, occupation and enjoyment of exhibit space by Exhibitor or any person thereon with the consent of Exhibitor, and that Exhibitor will defend, indemnify and save harmless, 2012 RT from all liability whatsoever, on account of any such damage, or injury, whether or not caused by negligence of or breach of an obligation by Exhibitor or its employees or representatives. Exhibitor will be liable for all damages, or liability of any kind or for any loss, damage or injury to persons or any property during the show from any cause whatsoever by reason of use, occupation and enjoyment of exhibit space.

8. Demonstrations

No demonstrations or solicitations shall be permitted outside of the Exhibitor's assigned space, and no signs or placards may be displayed on persons or otherwise outside exhibit spaces.

9. Compliance

The Exhibitor assumes all responsibility for compliance with all pertinent ordinances, regulations and codes of duly authorized local, State and federal governing bodies concerning fire, safety and health, together with the rules and regulations of the operators and/or owners of the property wherein the Show is held.

10. Policy

It is further agreed that the Exhibitor will abide by and comply with rules and regulations concerning local customs that may apply, having agreements with the Show Facility or with authorized contractors employed by 2012 RT.

11. Management

The Exhibitor further agrees that the conditions, rules and regulations of the 2012 RT management are made a part of this contract and that said Exhibitor agrees to be bound by each and all of these rules and regulations, and that the management shall have the full power to interpret, amend and enforce all rules and regulations in the best interest of the Show.

12. Alteration of Booth Space

2012 RT management shall be entitled to alter the layout if, in their opinion, this is in the general interest of the Exhibition.